



AASHTO

AASHTO 2022 Conference on Performance-Based Management, Planning, and Data



***Connecting the DOTs for an Adaptable,
Agile, and Equitable Future***

HOPE

December 5–9, 2022 • Omni Hotel Providence, Rhode Island

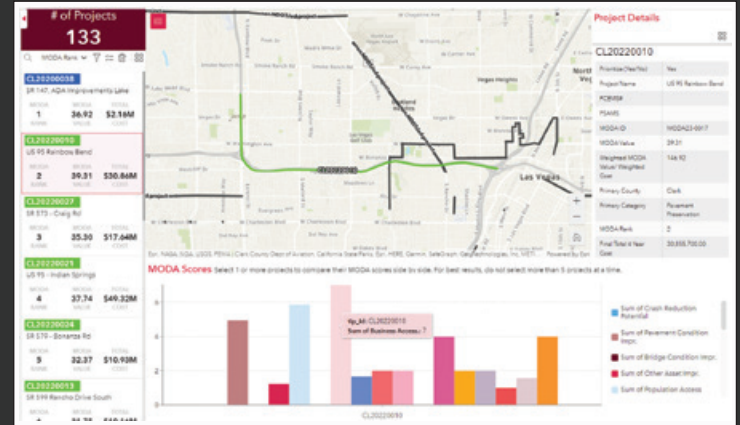
Jacobs brings Digital Solutions to Enhance Performance Based Planning



HivePrioritize

Decision Analytics

HIVE is a GIS-based data-driven decision analytics tool for Transportation planning that enables transparency in the development and prioritization of a capital improvement program. HIVE leverages a Multi-Objective Decision Analysis (MODA) tool to weight and score project priority based on stakeholder input and data-driven results.



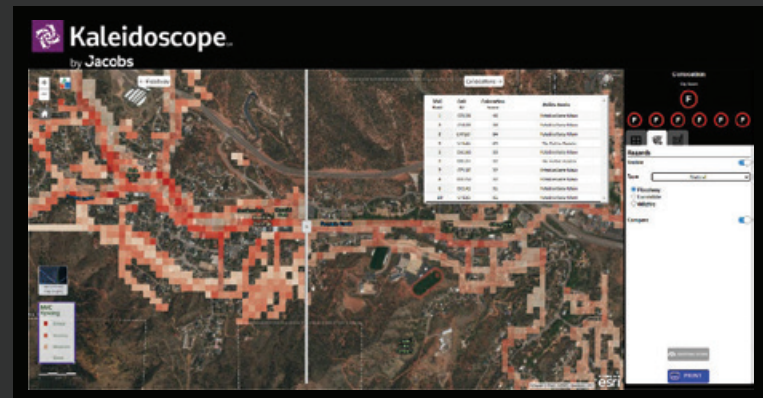
HIVE brings together GIS-based projects and transparent data

Kaleidoscope

A Critical Path to Infrastructure Resilience

Kaleidoscope is a predictive analytics app that helps assess vulnerabilities and threats across multiple sectors of fixed horizontal infrastructure. Kaleidoscope uses the power of spatial analytics to identify exactly where infrastructure is most vulnerable so leaders can make informed, objective decisions on where to spend their limited budgets.

Kaleidoscope examines three types of infrastructure failure: Existing Conditions, Collocation, and Natural Hazards.



Kaleidoscope has synthesized multiple data sources to help you identify infrastructure vulnerabilities on a local or broad level.

STREETLIGHT

Analytics empowering smarter, data-driven transportation decisions

StreetLight InSight® is big data web platform that harnesses connected device and IoT data to measure vehicle, transit, bike, and foot traffic virtually anywhere. A self-serve software with 24/7 access to traffic volumes, Origin-Destination, turning movement counts, demographics, routing, speed, and more – for any road, area or time period – in a few clicks.



StreetLight applies proprietary machine-learning algorithms and its vast data processing resources to measure travel patterns of vehicles, bicycles, pedestrians, and transit, accessible as analytics in StreetLight InSight®.

Our Meeting Sponsors

*AASHTO would like to thank
all our 2022 Sponsors!*

PREMIER SPONSORS

The logo for Jacobs, featuring the word "Jacobs" in a bold, black, sans-serif font.

CAPITOL SPONSOR

The logo for HAULHUB TECHNOLOGIES, featuring the word "HAULHUB" in a bold, black, sans-serif font, with "TECHNOLOGIES" in a smaller, black, sans-serif font below it.

EVENT/ITEM SPONSORS

The logo for Deloitte, featuring the word "Deloitte" in a bold, black, sans-serif font, with a small green dot at the end.The logo for INRIX, featuring the word "INRIX" in a bold, blue, sans-serif font, with a small blue dot at the end.The logo for applied pavement TECHNOLOGY, featuring a green circular icon with a white dot in the center, followed by the text "applied pavement" in a black, sans-serif font, and "TECHNOLOGY" in a smaller, black, sans-serif font below it.The logo for CAMBRIDGE SYSTEMATICS, featuring a green and blue circular icon with a white dot in the center, followed by the text "CAMBRIDGE SYSTEMATICS" in a black, sans-serif font.The logo for CATCH intelligence, featuring a stylized orange and black icon, followed by the text "CATCH" in a bold, black, sans-serif font, and "intelligence" in a smaller, orange, sans-serif font below it.The logo for CDM Smith, featuring the text "CDM" in a bold, blue, sans-serif font, and "Smith" in a smaller, blue, sans-serif font below it.The logo for Google, featuring the word "Google" in its multi-colored, sans-serif font.The logo for HIGH STREET, featuring the words "HIGH STREET" in a bold, black, sans-serif font, with "HIGH" in white and "STREET" in black.The logo for AUTODESK, featuring a stylized "A" icon followed by the word "AUTODESK" in a bold, black, sans-serif font.The logo for spy pond partners, llc, featuring a stylized blue and black icon, followed by the text "spy pond partners, llc" in a black, sans-serif font.

TIER LEVEL SPONSORS

The logo for CATCH intelligence, featuring a stylized orange and black icon, followed by the text "CATCH" in a bold, black, sans-serif font, and "intelligence" in a smaller, orange, sans-serif font below it.The logo for ICF, featuring a stylized multi-colored icon, followed by the letters "ICF" in a bold, black, sans-serif font.The logo for tableau, featuring a stylized multi-colored icon, followed by the word "tableau" in a black, sans-serif font.

Question today
Imagine tomorrow
Create the enduring



Proud supporter “Connecting DOTs for an Adaptable,
Agile and Equitable Future”

WSP strives to support state DOT efforts
by offering planning and performance management services
for a robust transportation system.

Find out what we can do for you.



wsp.com



Overview Agenda

30-minute breaks offered everyday at 10:00 a.m. and 3:00 p.m.

Monday, December 5

9:30 a.m.–5:00 p.m.

Breakfast available 8:00 a.m.–9:30 a.m. | Lunch times vary by workshop | Afternoon break will be available.

Workshop on Complete Streets—*Newport/Washington*

The concept of complete streets has been around for a long time. Even so, the state of practice continues to evolve as treatments and customer expectations continue to change. Some DOTs are on the cutting edge, while others are still exploring the possibilities. This workshop will serve to bring together advanced practitioners and novices to discuss existing practice and challenges, and the range of policy implementation across the nation. Overall, participants can expect to learn about the state of complete streets across the country, engage with peers facing similar challenges and opportunities, and brainstorm about the future of continued complete streets implementation.

Implementation of the Performance Management Program: What Have We Learned and What Does the Future Hold?—*South County*

The Transportation Performance Management (TPM) Pooled-Fund program will host a workshop to further advance the state of TPM practice, including reflecting on the accomplishments of the TPM Pooled-Fund and looking to the future of TPM and what is most needed to advance TPM practice. Participants will hear from TPM leaders and share their own experiences and needs. A dialogue about what the next generation of TPM will look like will be on the agenda. Ideas for TPM advancement, partnering opportunities, and national research and implementation will be generated and prioritized. This workshop will include a discussion of the new AASHTO TPM Technical Service Program and how it will be organized and run.

Data Literacy for Transportation Data—*Bristol/Kent*

Achieving the digital transformation (better decisions, better outcomes) requires a critical mass of data literate decision makers and agency staff. This session introduces the topic of data literacy—what is it and why is it important—agency leaders will frame topics such as strategies they have implemented to try to build data literacy within their organizations. Session attendees will participate in a deep dive into data literacy, identify resources and support networks, and gain practical knowledge for starting to build data literacy at their own organizations.

5:30 p.m.–7:00 p.m.

Icebreaker Reception—*Providence Ballroom*

Tuesday, December 6

7:00 a.m.–8:30 a.m.

Breakfast Session: Joint Meeting of the Policy Subcommittees—*Narragansett A*

8:30 a.m.–10:00 a.m.

Opening Plenary: Using Data Science to Plan Your Projects and Evaluate Your Programs

SPONSORED BY

Deloitte.

—*Narragansett B & C*

Welcome to Rhode Island and the 2022 AASHTO Conference on Performance-Based Management, Planning, and Data! The theme of the conference is Connecting the DOTs for an Adaptable, Agile, and Equitable Future. State DOTs must address a myriad of goals focused on safety, asset condition, operations, resilience, and equity among others, and plan for a future that is far from certain. There are also expectations that data will provide a wealth of information to better inform and support the decision-making process. This opening session will set the stage for the conference with a discussion among state DOT leadership on how their organizations are adapting their programs to be more agile for an uncertain future and equitable for all users of the transportation system.

Welcome Remarks:

Loren Doyle and **Lori Fisette**, Rhode Island DOT

Jim Tymon, AASHTO

Derek Torrey, FHWA Division Administrator, Rhode Island

Rob Cary, Deloitte

Panel Discussion Moderator: **Rob Cary**, Deloitte

Panelists:

Christos Xenophontos, Rhode Island DOT, Committee on Performance-Based Management

Kristina Swallow, Nevada DOT, Committee on Planning

Mike Bousliman, Montana DOT, Committee on Data Management and Analytics

Ryan Huff, Nebraska DOT, Conference Planning Committee

10:30 a.m.–Noon

Safe System Approach in the Decision-Making Process—*Newport/Washington*

The safe system approach is a holistic and comprehensive approach that provides a guiding framework to make places safer for people. This is a shift from a conventional safety approach because it focuses on both human mistakes AND human vulnerability, and designs a system with many redundancies in place to protect everyone. Addressing the safe system approach begins with the planning process and the data to understand where vulnerabilities exist and the transportation infrastructure needs to be redesigned, be it long-range planning, programming funds, or project planning. This session will be an opportunity to better understand the safe system approach, ongoing projects that will support practitioners with needed tools and resources, and what state DOTs are doing to implement it.

Moderator: **Kristina Swallow**, Nevada DOT

Panelists:

Background	Tools and Resources	State DOT Panel Discussion
Chimai Ngo , Office of Safety, FHWA	Kelly Hardy , AASHTO	Karen Miller , Missouri DOT
Spencer Stevens , Office of Planning, FHWA	Ian Hamilton , VHB	Jean Wallace , Minnesota DOT
		Steven Pristawa , Rhode Island DOT

Tuesday, Dec 6—continued

Measures for a Better World: Emerging Performance Measures—Bristol/Kent

SPONSORED BY

Jacobs

Transportation agencies are expanding their focus to include bigger picture goals, evolving from a pure operational perspective to considering outcomes representing wider dimensions. This evolution requires measures that more effectively capture the impacts of the system and services delivered by DOTs and other transportation agencies. Exploration of new measures and methods towards emerging areas of interest are progressing to expand the ability to measure the intangible benefits and outputs of transportation investments. This technical session will highlight areas that are generating lots of interest and excitement - equity measures, quality of life frameworks, accessibility analysis tools, and an approach to using complete trips as a metric. Agencies who are leading these explorations will share the progress they have made and session attendees will have an interactive discussion in breakouts on what areas are most promising, what challenges are still a barrier, and how to make faster progress on emerging measures.

Moderator: **Deanna Belden**, Minnesota DOT

Panelists:

Philip Schaffner, Minnesota DOT

Patrick Cowley, Utah DOT

Andrew Owen, University of Minnesota

Rich Taylor, FHWA

Drowning in Data—South County

SPONSORED BY

Deloitte.

Data availability is on the rise. You have too much data, but is it the data you need? How do you assess the quantity—is too much or not enough? What about the character of the data such as data that happens as a result of actions; data that is collected, created and curated; or the relational versus spatial aspect of it? You may have to contend with control of the data and how it is attained and managed. But there is also the quality of the data and ensuring it is ready for use and fit for purpose. This session will address the AASHTO seven core data principles help that recommend data is Valuable, Available, Reliable, Authorized, Clear, Efficient, and Accountable.

Moderator: **Anant Dinamani**, Deloitte

Panelists:

Denise Whitney Dahlke, Oregon DOT

Suvani Gautam, Nevada DOT

Matthew Modarelli, Washington State DOT

Noon–1:30 p.m.

Lunch—Narragansett A

Welcome to Rhode Island!, **Pam Cotter**, Rhode Island DOT

Optional: *Birds of a Feather Lunch Tables (BoaF)*: An opportunity to meet with your like-minded or like-interested colleagues on a topic not otherwise covered by the conference program. Some lunch tables will be set with a tabletop sign calling the Birds of a Feather—perhaps it's your TRB committee, your subcommittee or task force, fly-fishing enthusiasts, the sky is the limit. (To request a BoaF table, see registration.)

Tuesday, Dec 6—*continued*

1:30 p.m.—3:00 p.m.

Using Scenario Planning to Drive Change—*Newport/Washington*

TRB's recent 2nd Scenario Planning in Transportation Conference identified several important strategies that can equip all transportation agencies with the ability to respond successfully to change. These themes include: 1) a deeper understanding of the users of our systems and why they need the transportation system; 2) a renewed focus on why which requires a bias toward action; and 3) an understanding of the long-term and emerging trends which impact the need for and use of the transportation system. This session will discuss the need and ways to consider the why more successfully in decision-making in a world of constant disruptions.

Moderator: **Stephen Woelfel**, Massachusetts DOT

Panelists:

Julie Lorenz, Kansas DOT

Carrie Lavallee, Massachusetts DOT

Alyssa Ryan, University of Arizona

Kerri Woehler, Washington State DOT

Effective Methods for Setting Transportation Performance Targets, Part 1—*Bristol/Kent*

This workshop will provide an opportunity for participants to learn about effective methods for setting transportation performance targets, based on the results of National Cooperative Highway Research Program (NCHRP) Project 23-07. The workshop will provide opportunities to engage with peers from around the country and learn from other agencies about target setting practices.

PART 1 will highlight analytic methods for setting targets for the national performance measures (safety, infrastructure condition, travel time and freight reliability, and congestion measures), including information on different types of methods, procedures for applying methods, issues to consider, and examples of different methods.

Leveraging Data for Decision-Making—*South County*

SPONSORED BY

Deloitte.

Let's look at the path from data to decisions—how do we authorize our data for decision-making capabilities. Data issues run the gamut from fundamental data management capabilities that need to be in place, to the change management approach we need to consider in order to ensure our workforce is optimized. Our data needs not only to be useable for decision-making, forecasting, nowcasting, but also to support mature analytical and reporting requirements. This session will showcase experts in a variety of disciplines, all with experience in maturing the data driven organization. They will each share their experience in building data driven decision capabilities and the changes instituted to enable these processes. In interactive table-top activities, you will workshop scenarios and questions with your colleagues.

Moderators: **Aubrey Gunnels** and **Steve Hardy**, Deloitte

Panelists:

Sondra Rosenberg, Nevada DOT

Jannine Miller, Georgia DOT

Meghan Haggerty, Massachusetts DOT

Tuesday, Dec 6—continued

3:30 p.m.–5:00 p.m.

Equity in Decision-Making and Planning Processes—*Newport/Washington*

SPONSORED BY



This session will feature a facilitated panel discussion covering topics on equity through the lenses of organizational management and culture, data, and public engagement and communication. State DOT representatives will address how their agencies have incorporated equity efforts into decision-making and planning processes, and United Way will address research on the Asset Limited, Income Constrained, Employed (ALICE) population. Attendees will have the opportunity to discuss current practice, opportunities, and future worthy pursuits. Come ready to join the conversation!

Moderator: **John Kaliski**, Cambridge Systematics

Panelists:

United Way of Connecticut, (invited)

William Johnson, Colorado DOT

Philip Schaffner, Minnesota DOT

Spencer Stevens, FHWA

Effective Methods for Setting Transportation Performance Targets, Part 2—*Bristol/Kent*

This workshop will provide an opportunity for participants to learn about effective methods for setting transportation performance targets, based on the results of National Cooperative Highway Research Program (NCHRP) Project 23-07. The workshop will provide opportunities to engage with peers from around the country and learn from other agencies about target setting practices.

PART 2 will highlight process issues, such as different philosophies associated with setting targets, effective practices in setting targets, and ways to make the target setting process more valuable. The workshop will provide opportunities to engage with peers from around the country and learn from other agencies about target setting practices.

Is the Juice Worth the Squeeze for Better Data?—*South County*

SPONSORED BY



Determining the return on investment of data quality, accuracy, and precision is part science, part art, part knowledge, part faith. When do the costs of ostensibly better data outweigh the benefits? Better quality data has a cost at every step, but how do we judge the cost/benefit ratio? The conflict arises when the end user wants greater quality than is currently provided or even possible. How can an agency determine if the data is truly good enough.

Moderator: **Denise Whitney Dahlke**, Oregon DOT

Panelists:

Michael Pipp, Montana DOT

David Winter, FHWA

Ted Trepanier, INRIX

5:30 p.m.–7:00 p.m.

Conference Welcome Reception—*Providence Ballroom*

Wednesday, December 7

7:00 a.m.–8:30 a.m.

Breakfast Session: Joint Meeting of the Professional Development Subcommittees

—Narragansett A

Choose-Your-Own-Conference Adventure

The Choose-Your-Own-Conference Adventure is designed to provide attendees with either breadth or depth in different topical areas. There are six tracks that address various topics, including transportation asset management, preparing for the DOT of the future, data management, data analytics and visualization, performance management, and planning. Attendees can choose to go in depth on a particular topic for the duration of the 90 minutes or they can choose to sample different sessions from up to three different tracks. Individual sessions will start at the top and bottom of the hour. There will be five minutes to switch between individual sessions. The choice is yours so choose wisely!

8:30 a.m.–8:55 a.m.	Improve Your Planning & Programming Decisions With Asset Management	TRACK 1	Envisioning and Preparing for the DOT of the Future	TRACK 2	Data Management	TRACK 3
9:00 a.m.–9:25 a.m.		TAM: Can't We All Get Along (Range Plan)?		Planning for the Technological Disruption		Managing Data Collected with Mobile Devices
9:30 a.m.–9:55 a.m.		TAM: Seize the Day-ta		Describing the Vision for the Next Era of Transportation		Joint Subcommittee on Data Standards—What's Going On?
10:00 a.m.–10:30 a.m.		TAM: The Past, Present, and Future Walked into a Bar... It Was Tense		Implementing the Vision for the Next Era of Transportation		Data Management Strategy for the Enterprise
BREAK						
10:30 a.m.–10:55 a.m.	Data Analytics and Visualization	TRACK 4	Performance Management	TRACK 5	Plans, Plans, Plans... They're Everywhere!	TRACK 6
11:00 a.m.–11:25 a.m.		Data Visualization for Transportation Performance		VDOT SMARTSCALE: Funding the Right Transportation Projects		Data Management Plans
11:30 a.m.–11:55 a.m.		Teaching Old Data New Tricks		Using Complete Trip Data		EV Charging and Alt-Fuel Infrastructure Planning
		Alaska PBPP: The Next Frontier		Coordinating the Measures that Matter—Federal, State, and Local		Linking Your TAMPs and RIPs

Track Sponsors



Wednesday, Dec 7—continued

Track Descriptions

1. **Improve Your Planning & Programming Decisions With Asset Management**—Explores asset management practices used in state DOTs to improve planning and programming activities. The session includes strategies for linking asset management with long-term plans, connecting data to strategies for managing assets, and adapting practices within an evolving world.
Sponsor: **Applied Pavement Technology, Inc.**
Room: Newport/Washington
Moderator: **Katie Zimmerman**, Applied Pavement Technology, Inc.
2. **Envisioning and Preparing for the DOT of the Future**—Focuses on how changing customer needs, disruptive technologies, and other market forces are transforming the way we live, work, connect, and move. These changes are pointing toward a renewed vision of the future of transportation and a changing role for a state department of transportation.
Room: Bristol/Kent
Moderator: **Christos Xenophontos**, Rhode Island DOT
3. **Data Management**—From the very small to the very large, from devices, to standards to enterprise-wide data management, come-and-hear plans, strategies, and cases of data management.
Sponsor: **CATCH Intelligence**
Room: South County
Moderator: **Lou Anne Daugherty**, Nebraska DOT
4. **Data Analytics and Visualization**—Looks at the intersection of data analytics and visualization to better support the decision-making process. Topics include how to maximize your existing data, communicating with charts, and developing a useful performance dashboard.
Sponsor: **High Street Consulting**
Room: Newport/Washington
Moderator: **Ryan Huff**, Nebraska DOT
5. **Performance Management**—Explores how transportation agencies are using the principles of performance management to better pick projects and allocate limited funding. Speakers will focus on project selection and accessibility performance and conclude with a discussion on how we need to coordinate measures from the Federal, state, and local perspectives.
Room: Bristol/Kent
Moderator: **Deanna Belden**, Minnesota DOT
6. **Plans, Plans, Plans...They're Everywhere!**—Focuses on how state DOTs are developing and coordinating on the many different Federally- and agency-required transportation plans. Topics include planning for electric vehicles, data, and resilience improvement plans.
Sponsor: **CDM Smith**
Room: South County
Moderator: **Lisa Sherman**, CDM Smith

Wednesday, Dec 7—continued

Session Descriptions

8:30 a.m.–8:55 a.m.

TAM: Can't We All Get Along (Range Plan)? [Track 1]

Scenario planning is an important part of long-range planning. Join us to learn how the North Dakota DOT evaluated the potential impacts of five alternate futures, defined in its long-range plan, to determine likely impacts on its 10-year asset management investment strategies and resulting asset conditions.

Presenter: **Jack Smith**, North Dakota DOT

Planning for the Technological Disruption [Track 2]

The combination of new technologies and service models, for example autonomous vehicles, micromobility or new transit systems, is dramatically altering the landscape of how people view mobility, how they travel, and their associated travel attitudes, behavior and expectations. Transportation agencies and enterprises are re-evaluating their policy and regulatory frameworks, business-models, infrastructure plans, customer-service concepts and their organizational structures, skills and capacities. PIARC created a case study summary report to capture how transport agencies are responding to these technological innovations. This session will provide a readout on this topic.

Presenter: **Nate Higgins**, Slalom

Managing Data Collected with Mobile Devices [Track 3]

Many applications allow users to collect field data via mobile devices (phone/tablets). Learn how DOTs are managing the collection and editing of this data.

Presenter: **Greg Ciparelli**, Connecticut DOT

9:00 a.m.–9:25 a.m.

TAM: Seize the Day-ta [Track 1]

Transportation agencies have invested heavily in their data because of its value in informing investment decisions. During this presentation, you'll hear how the Minnesota DOT has been able to right-size its approach to data management in support of its data-informed process for managing ancillary assets.

Presenter: **Trisha Stefanski**, Minnesota DOT

Describing the Vision for the Next Era of Transportation [Track 2]

Demographic, economic, development, environmental, technological, and other trends are changing the demand for moving people and freight; the mobility options available to serve our customers; and the capacity of state DOTs to carry out our mission. Through NCHRP 20-24(138), AASHTO conducted research and developed consensus among state DOT leaders around a national transportation vision. This session will describe the trends, uncertainties, and disruptions shaping the future of transportation in the United States and the vision developed and recently adopted by the AASHTO Board of Directors to guide state DOTs during the next decade, including initial concepts for "moonshots" we could achieve during this time.

Presenter: **Julie Lorenz**, Kansas DOT

Joint Subcommittee on Data Standards—What's Going On? [Track 3]

A Joint Subcommittee on Data Standardization was established by AASHTO's Strategic Management Committee in February 2020 to ensure coordination among interested groups within AASHTO and to promote the adoption of standardized data schemas—including helping to coordinate schema development, identify gaps, resolve conflicts, and avoid duplication of effort. Join this session to learn more about this new group's efforts and how you can get involved.

Presenter: **Mike Bousliman**, Montana DOT

Wednesday, Dec 7—continued

9:30 a.m.–9:55 a.m.

TAM: The Past, Present, and Future Walked into a Bar...It Was Tense [Track 1]

With the current pace of change in the industry, adaptability appears to be the way forward. Join the discussion with this panel of experts as they share their ideas for applying asset management concepts to manage non-physical assets, addressing changing investment priorities (e.g., equity, sustainability, resilience), connecting asset management with performance management, and enhancing agency performance (e.g., safety, mobility, on-time delivery).

Panelists:

Michael Johnson, Caltrans; **Matt Haubrich**, Iowa DOT

Louis Feagans, Indiana DOT; **Mshadoni Smith-Jackson**, FHWA

Implementing the Vision for the Next Era of Transportation [Track 2]

A vision needs implementation to be successful. NCHRP 20-24(138) also identified a spectrum of individual and collective actions state DOTs and their partners could undertake to advance a national transportation vision, including initial concepts for “moonshots” during this decade. This session will share the initial recommendations from this project and gather input on how AASHTO and its partners can continue to collaborate to advance the vision.

Presenter: **Kirk Steudle**, Steudle Executive Group

Data Management Strategy for the Enterprise [Track 3]

Implementing agency-wide data strategies. Can enterprise data solutions, such as strategic plans, platforms, and central data warehouses improve planning and analytics capabilities? See how these lead to more efficiency and hopefully, more informed decision making.

Presenter: **Mark Floersch**, CATCH Intelligence

10:30 a.m.–10:55 a.m.

Data Visualization for Transportation Performance [Track 4]

You know the feeling. You're in a meeting and the slides are terrible. It's the charts! They're too complicated or virtually unreadable. Don't be that person. Informed by transportation performance dashboards from DOTs, this session will provide foundational best practices in data visualization that you can start applying today.

Presenter: **Brittany Gernhard**, High Street Consulting

VDOT SMART SCALE: Funding the Right Transportation Projects [Track 5]

Virginia is in its fifth round of using the SMART SCALE prioritization process to screen and score transportation projects of any mode. Join this session to learn how the multimodal evaluation process addresses safety, congestion, accessibility, economic development, environmental quality, and land use. We'll also take a deeper dive into how VDOT has used accessibility analysis tools to support SMART SCALE.

Presenter: **Peter Ohlms**, Virginia Transportation Research Council

Data Management Plans [Track 6]

It sounds straightforward enough; A Data Management Plan should describe all aspects of the data lifecycle, guide the collection of data that meets its primary quality objectives, and ensure responsibilities are assigned for data management activities. Easy Peazy! Come and hear an expert discuss her state's journey from no plan to A PLAN.

Presenter: **Peggi Knight**, Iowa DOT

Wednesday, Dec 7—continued

11:00 a.m.–11:25 a.m.

Teaching Old Data New Tricks [Track 4]

Repurposing data from its original purpose to answer new questions is a clever way to get new value out of old data. This session shares three examples of applying data science to repurpose old data to valuable new uses and provides practical tips for identifying similar opportunities in your own agency.

Presenter: **Korey Donahoo**, Nebraska DOT

Using Complete Trip Data [Track 5]

Complete trip data is essential to understanding transportation network and multimodal system performance. With data now more readily available across all modes, there are opportunities to use complete trip data to understand individual trips from origin to destination—and beyond! This session will report on research conducted by FHWA on defining and acquiring complete trip data and discuss potential uses of the data for transportation planning, corridor studies, TSMO, performance management, and other applications.

Presenter: **Rich Taylor**, FHWA

EV Charging and Alt-Fuel Infrastructure Planning [Track 6]

All 50 states, D.C., and Puerto Rico received approval for their NEVI plans in September 2022. As the state DOTs begin the implementation process, how do they plan to leverage the NEVI and other programs to pursue other electrification opportunities such as medium- and heavy-duty vehicles, transit, and commercial vehicles, fleet charging, and others. State DOTs will discuss other electrification initiatives within their state and ways they plan to leverage NEVI.

Presenters: **Elizabeth Irwin**, Illinois DOT; **Alison Stettner**, Florida DOT

11:30 a.m.–11:55 a.m.

Alaska PBPP: The Next Frontier [Track 4]

From remote ice roads to urban interstates, AKDOT&PF are establishing a diverse set of large-scale PBPP strategies fitting of the biggest land mass state in the country. Establishing a foundational data program with a modern analytics center to support a performance-based policy process requires vision and persistence.

Presenter: **James Marks**, Alaska DOT&PF

Coordinating the Measures That Matter—Federal, State, and Local [Track 5]

Every state must consider measures required by U.S. DOT, state governing bodies/strategic plans, and local communities. Ensuring the measures and communications are coordinated, relevant, and clear can be challenging. This session will be an exchange of ideas and tactics state DOTs use to ensure a coordinated story and strategic direction emerge from the performance measures they monitor.

Moderator: **Pam Cotter**, Rhode Island DOT

Presenters:

Kerri Woehler, Washington State DOT; **Scott Zainhofsky**, North Dakota DOT

Connie Porter-Betts, Louisiana DOTD; **Michael Johnson**, Caltrans

Linking Your TAMPs and RIPs [Track 6]

Under the Infrastructure Investment and Jobs Act (IIJA), state DOTs are required to consider extreme weather and resilience in their TAMP development processes and analyses. IIJA also provides an incentive for state DOTs to develop Resilience Improvement Plans (RIP) as part of the new PROTECT program. This session will explore how one agency plans to link the TAMP and RIP.

Presenters: **William Johnson**, Colorado DOT; **Jessica Griffin**, New Mexico DOT

Wednesday, Dec 7—continued

Noon–1:00 p.m.

Lunch—Narragansett A

Optional: *Birds of a Feather Lunch Tables (BoaF)*: An opportunity to meet with your like-minded or like-interested colleagues on a topic not otherwise covered by the conference program. Some lunch tables will be set with a tabletop sign calling the Birds of a Feather—perhaps it's your TRB committee, your subcommittee or task force, fly-fishing enthusiasts, the sky is the limit. (To request a BoaF table, see registration.)

1:30 p.m.–5:30 p.m.

On-Site Workshops, Mobile Workshops, and Technical Tours

1. ON-SITE WORKSHOP: Making Targets Matter: Managing Performance to Enhance

Decision-Making—Newport/Washington

Making Targets Matter is a guide for transportation practitioners on how to make performance management a more meaningful activity at their agencies. The research focuses on breathing new life into performance management by gathering and using feedback for performance assessment and decision-making. The guide's strategies are based on wisdom shared by leading practitioners across the country whose experiences offer helpful insights on effective practices. This workshop seeks to build on and deepen the initial set of strategies developed under the first phase of research. We seek participation by practitioners at state DOTs, MPOs, or transit agencies, who have dealt with performance issues in the past, or who are tasked with them in their current role and wish to engage with peers to address challenges.

2. ON-SITE WORKSHOP: Modalopoly: Implementing Risk, Resilience, and Performance

Management in Your Agency—Narragansett B & C

Recognizing most agencies are in the early stages integrating performance, asset, and risk management, this workshop will help you build a roadmap for integrated management within your agency. The tactical and strategic roadmap will include steps for organizing structure, change management and communication to enterprise systems, qualitative/quantitative analysis, build resiliency and data governance. It will follow the general outline of the childhood game Monopoly where workshop participants will move around the "MODALOPOLY" game board, gathering information on the performance of their system, condition of their assets, and external and internal risks to their assets and potential performance methods to make better data-driven decisions.

3. ON-SITE WORKSHOP: CATT Lab Real-World Data Analytics Use-Cases and Tutorials—South County

This workshop will provide an overview and review on how to use National Performance Management Research Data Set (NPRMDS) data and analytics to respond to Federally mandated reporting requirements. It will also showcase other analytical tools that leverage NPMRDS data for conducting look-back analysis, computing user delay cost, develop performance maps, graphs, and other visualizations using this free data set. The workshop will cover the following topics:

- Using Connected Vehicle Waypoint Data to Measure Corridor Impacts (including route choice) from Unintended or Planned Events
- Signalized Intersection Performance Measures Without Installing New Hardware in the Field
- Executives, Elected Officials, and the Driving Public—Using SME-Designed Report Templates to Effectively Communicate Your PM Story
- Weather, Crashes, Work Zones, or Signals: Calculate Why Your Roads Are Congested in 10 Minutes.
- Rapid and High-Quality After-Action Review Reporting for Crashes and High-Impact Work Zones

Wednesday, Dec 7—continued

4. ON-SITE WORKSHOP: AI, Analytics and Scenario Analysis with Google and Deloitte

—Bristol/Kent

SPONSORED BY



Do you want to get better insights from your data and get them more easily? Google is known for Search, Maps, and Gmail—easy to use applications powered by AI. Google Cloud is bringing the power of data analytics, AI, and machine learning to transportation agencies. In this session, participants from diverse, non-technical backgrounds will get hands-on experience using Google tools to ingest data, build predictive models, generate insights, and create powerful visualizations. Deloitte will show their AI-based, scenario, planning tool. Use-cases include safety and mobility, operationalizing customer/community feedback, equity, and resilience.

5. MOBILE WORKSHOP: Biking Infrastructure in Providence

SPONSORED BY



Join us for a 17.5-mile-pedal-assist, SPIN e-Bike tour of Providence bicycle infrastructure, we will see all manner of bike lanes, bike boxes, two-stage bike left turn boxes, historic architecture, important parks. Also, hear about the good (and some not so good) history of transportation decision-making in Providence, as we learn of the multi-agency, non-profit, and commercial stakeholder's collaboration for bicycle network creation amidst concerns for climate change and resiliency.

6. MOBILE WORKSHOP: Walking Infrastructure in Providence

SPONSORED BY



Join your colleagues for a walking tour of downtown Providence, RI. Explore this vibrant city and see for yourself the infrastructure improvements that have turned the city into a desired destination for businesses, residents, and visitors. Your tour will include the Rhode Island State House, the Providence River trail, and the Providence Pedestrian Bridge connecting Providence's East Side to the Innovation District and the Wexford Innovation Center.

7. TECHNICAL TOUR: Rhode Island DOT Transportation Asset Resilience

North Road, located on Jamestown Island, is partially built on a causeway and is susceptible to regular, sunny-day flooding such as King Tides, as well as climate change and sea-level rise. A box culvert, built nearly 80 years ago, is in poor condition and needs to be replaced. However, there are numerous challenges in doing the necessary work. Join RIDOT in touring the North Road in Jamestown, RI, and to better understand and assess the risks for the existing infrastructure, identify adaptation strategies, and potential infrastructure- and nature-based solutions, and make decisions that improve its resilience to ensure that it can continue operating, both now, and in the future.

Thursday, December 8

7:00 a.m.–8:30 a.m.

Breakfast Session: Joint Meeting of the Research Subcommittees—Narragansett A

8:30 a.m.–11:45 a.m.

The Unconference Sessions: Adding Breadth and Depth to the Transportation Issues of Today—Narragansett B & C

What did we miss, what's so new and hot we must discuss it? What came up this week that needs more? These thoughts will occur to you during the conference week, but don't be frightened! We all have these thoughts. Just jot them down on the big friendly post-it notes by registration, and watch the unconference come to life!

Thursday, Dec 8—continued

8:30 a.m.–11:45 a.m.

Workshop on Updating the AASHTO Digital TAM Guide (invitation only)—*Newport/Washington*

The NCHRP Project 08-137 Updates to the Digital Edition of the *AASHTO Transportation Asset Management Guide* is seeking input on what improvements should be added to the digital version of the current *AASHTO TAM Guide*. Possibilities include, new research, lessons learned, new asset management tools, gaps in practice, new issues in TAM, and additional practice examples, how-to guides, checklists. The project will also develop a web-based TAM gap analysis tool.

Noon–1:00 p.m.

Lunch with Closing Remarks—*Narragansett A*

1:30 p.m.–5:00 p.m.

Annual Business Meeting: Committee on Planning—*South County*

Chair: **Kristina Swallow**, Nevada DOT

Vice Chair: **Lynn Weiskopf**, New York State DOT

Annual Business Meeting: Committee on Performance-Based Management—*Newport/Washington*

Chair: **Christos Xenophontos**, Rhode Island DOT

Vice Chair: **Jean Wallace**, Minnesota DOT

Annual Business Meeting: Committee on Data Management & Analytics—*Narragansett B & C*

Chair: **Eric Boyette**, North Carolina DOT

Vice Chair: **Denise Whitney Dahlke**, Oregon DOT

Friday, December 9

8:00 a.m.–4:00 p.m. *Breakfast available 7:00 a.m.–8:30 a.m.*

Transportation Asset Management Peer Exchange on System and Asset Resilience —*Newport/Washington*

The 2022 FHWA/AASHTO Transportation Asset Management (TAM) peer exchange will focus on how to better integrate resiliency building into transportation agencies' TAM programs and activities. The Infrastructure and Investment Jobs Act (IIJA) includes additional requirements for integration of resiliency building to mitigate climate change risks in the state transportation asset management plans (TAMPs). Agencies will share how they are increasing TAM resiliency building and discuss what needs to be done nationally to better support resiliency building advancements.

Data Governance Workshop: Actionable Insights for Data Management, Analytics, and Governance—*Bristol/Kent*

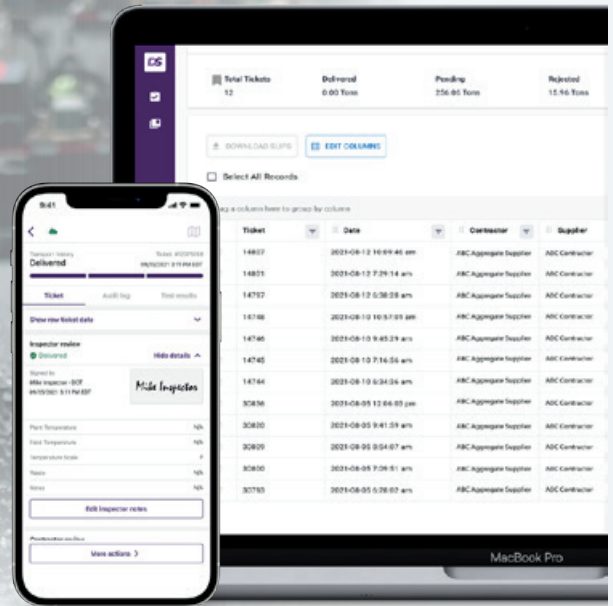
State DOTs are initiating and evolving data programs to be more explicit and direct with data management, governance, and analytics with a goal of becoming more data-driven and better data-informed agencies. Foundational elements requisite for success and sustainability, include data management and governance policies; data strategies for collection, management, and/or analytics; staffing or resource plans for evolving skill sets; examining data collection and practices; and understanding your agency's cultural identity as these changes evolve. Spend a day with your peers and colleagues learning and sharing your experiences on including agility, adaptability, and equity into your data management and analytical programs.

THE ONLY **TURNKEY** **E-TICKETING** PORTAL SPECIFICALLY BUILT FOR STATE TRANSPORTATION AGENCIES

HAULHUB
TECHNOLOGIES

State Transportation Agencies nationwide are swiftly advancing their e-Ticketing initiatives with HaulHub's white-labeled turnkey portal with innovations like:

- Offline Capabilities for plants and job sites
- Certified Quantities
 - FHWA digital source record compliant
- Project Data Calibration
 - Real time accessibility of data for all stakeholders along the supply chain
- Continuous Intelligence
 - Clutter-free real time monitoring of project performance across your state
- Seamless integration into your state's e-Construction suite of digital tools



Visit: www.haulhub.com/agencyportal



Connecting the **DOT's**

Meet CATCH experts at our panel sessions this Friday. We take pride in helping state governments where they are and getting them to where they want to be.

CATCH Intelligence is a proud sponsor of CDMA and its mission.

At CATCH, we solve your Data Analytics challenges by defining vision and strategy while creating blueprints to support your business intelligence, data management, and application goals. We leverage a DOT specific repeatable and reusable methodology called M-Power Analytics to deliver blueprints and roadmaps for each of your Data Analytics lanes, including People, Process, Practice, Technology, Data Architecture, Data Governance, and Data Quality Management.

www.catchintelligence.com 402.715.5800

CODE OF CONDUCT

To foster a positive environment built upon a foundation of trust, respect, open communications, and ethical behavior, the American Association of State Highway and Transportation Officials (AASHTO) Board of Directors has issued a Code of Conduct that applies to AASHTO staff, Association members, and all AASHTO meeting and event attendees, for the duration of AASHTO events or when participating in other events representing AASHTO.

At all times, AASHTO staff, Association members, and meeting and event attendees, will be expected to abide by the Code of Conduct, specifically:

1. Contribute to a collegial, inclusive, positive, and respectful environment.
2. Consistently show respect to others and never take any inappropriate actions based on race, gender, age, religion, ethnicity, nationality, sexual orientation, gender expression, gender identity, marital status, political affiliation, presence of disabilities, or educational background.
3. Interact with others in a cooperative and respectful manner, never using insulting, harassing, or otherwise offensive language in their interactions. Disruptive, harassing, or inappropriate behavior toward other AASHTO staff, Association members, and meeting and event attendees, is unacceptable. Personal boundaries set by others must be observed. Harassment of any kind, including but not limited to, unwelcome sexual advances and other verbal or physical harassment will not be tolerated.
4. Obey all applicable laws and regulations of the relevant government authorities while acting on behalf of AASHTO; obey all applicable laws and regulations of the relevant government authorities while attending AASHTO meetings and events, and comply with all applicable safety guidelines.

Violations

Violations of this Code of Conduct should be reported promptly to AASHTO staff for investigation, or can be submitted to humanresources@aaashto.org, or reported to the AASHTO Executive Director or AASHTO President if appropriate. To the extent possible, AASHTO will try to keep the reporting individual's concerns confidential; however confidentiality cannot be guaranteed, and the reporting individual's identity may need to be revealed as the claim is investigated. Anyone, regardless of position or title, AASHTO determines has engaged in conduct that violates this policy will be subject to corrective action depending on the nature of the violation. Retaliation for reporting perceived violations in good faith or for cooperating in the investigations of any claims will not be tolerated.

*Approved by the AASHTO Board of Directors
October 9, 2019*

PDHs Tracking Sheet

Sign the sign-in sheet for each session you attend | Check each session you attend at this meeting.

Time	Session	PDH Offered	✓ Attended
Monday, December 5, 2022			
9:30 am – 5:00 pm	Workshop: <input type="checkbox"/> Complete Streets <input type="checkbox"/> Implementation of the TPM Program <input type="checkbox"/> Data Literacy for Transportation Data	4.0	<input type="checkbox"/>
Tuesday, December 6, 2022			
10:30 am – 12:00 pm	Technical Session: <input type="checkbox"/> Safe System Approach in the Decision-Making Process <input type="checkbox"/> Measures for a Better World: Emerging Performance Measures <input type="checkbox"/> Drowning in Data	1.5	<input type="checkbox"/>
1:30 pm – 3:00 pm	Technical Session: <input type="checkbox"/> Using Scenario Planning to Drive Change <input type="checkbox"/> Effective Methods for Setting Transportation Performance Targets <input type="checkbox"/> Leveraging Data for Decision-Making	1.5	<input type="checkbox"/>
3:30 pm – 5:00 pm	Technical Session: <input type="checkbox"/> Equity in Decision-Making and Planning Processes <input type="checkbox"/> Effective Methods for Setting Transportation Performance Targets <input type="checkbox"/> Is the Juice Worth the Squeeze for Better Data?	1.5	<input type="checkbox"/>
Wednesday, December 7, 2022			
8:30 am – 10:00 am	Choose Your Own Conference Adventure Track: (3 30-Minute Sessions) <input type="checkbox"/> _____ <input type="checkbox"/> _____ <input type="checkbox"/> _____	1.5	<input type="checkbox"/>
10:30 am – 12:00 pm	Choose Your Own Conference Adventure Track: (3 30-Minute Sessions) <input type="checkbox"/> _____ <input type="checkbox"/> _____ <input type="checkbox"/> _____	1.5	<input type="checkbox"/>
1:30 pm – 5:30 pm	Workshop: Onsite <input type="checkbox"/> Making Targets Matter <input type="checkbox"/> Modalopoly <input type="checkbox"/> CATT Lab Real-World Data Analytics Use-Cases and Tutorials <input type="checkbox"/> AI, Analytics and Scenario Analysis with Google and Deloitte Offsite <input type="checkbox"/> Biking Infrastructure Tour <input type="checkbox"/> Walking Infrastructure Tour <input type="checkbox"/> Rhode Island DOT Transportation Asset Resilience Tour	3.0	<input type="checkbox"/>
Thursday, December 8, 2022			
8:30 am – 11:45 am	The Unconference Sessions	2.0	<input type="checkbox"/>
Friday, December 9, 2022			
3:30 pm – 5:00 pm	Workshop: <input type="checkbox"/> TAM Peer Exchange <input type="checkbox"/> Data Governance Workshop	4.0	<input type="checkbox"/>
Total PDHs Earned:			

Name:	Organization:	Email:
-------	---------------	--------

Keep with your records – do not return to AASHTO.



Conference Planning Group

*Many thanks to our Planning Group members,
who played a critical role in planning this meeting:*

■ **Ryan Huff**, Nebraska DOT – Conference Chair ■

■ **Christos Xenophontos**, Rhode Island DOT – Host State ■

■ **Rachel Bain**, Massachusetts DOT ■

■ **Deanna Belden**, Minnesota DOT ■

■ **Edgardo Block**, Connecticut DOT ■

■ **Lou Anne Daugherty**, Nebraska DOT ■

■ **Jessica Griffin**, New Mexico DOT ■

■ **Matthew Haubrich**, Iowa DOT ■

■ **Nelson Hoffman**, FHWA ■

■ **Jannine Miller**, Georgia DOT ■

■ **Karen Miller**, Missouri DOT ■

■ **Michael Pipp**, Montana DOT ■

■ **Spencer Stevens**, FHWA ■

■ **Lynn Weiskopf**, New York State DOT ■

■ **Scott Zainhofsky**, North Dakota DOT ■

This image shows a single sheet of white paper with horizontal blue ruling lines. The lines are evenly spaced and run across the width of the page. There are no margins, text, or other markings on the paper.

RHODE ISLAND

