

# Transportation Performance Management Webinar Series

## Highlights from the AASHTO CPBM Peer Exchange and CPBM Annual Meeting

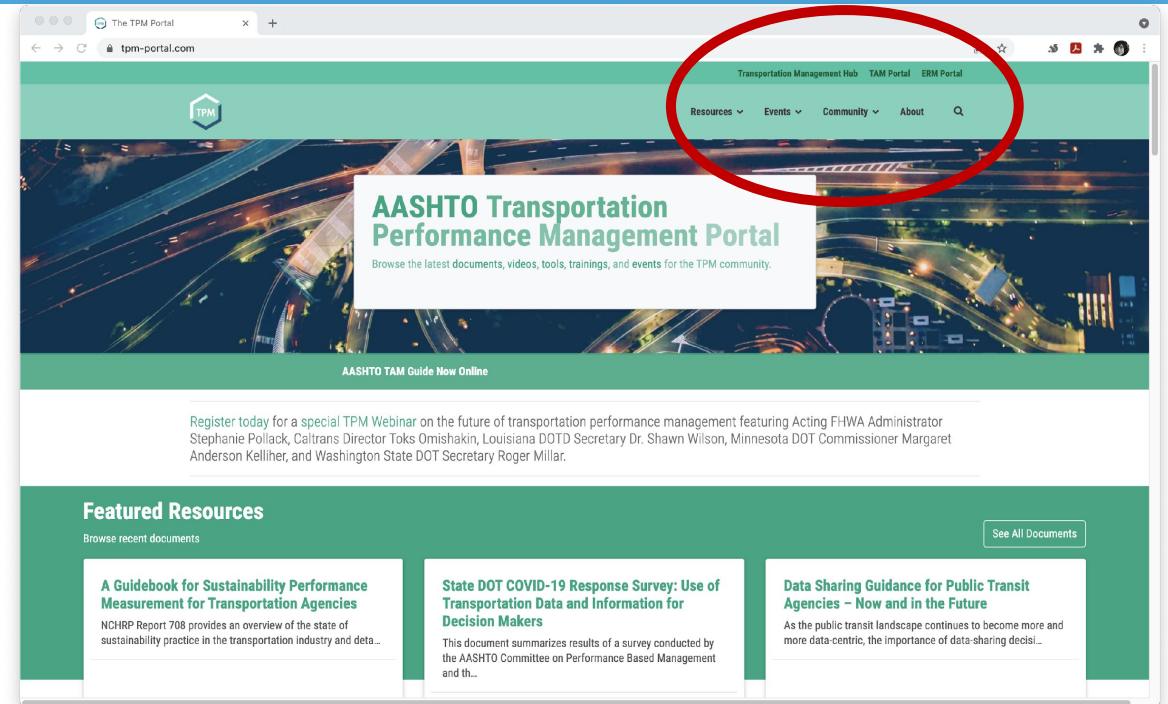
Sponsored by AASHTO and FHWA



**Wednesday, October 25, 2023**  
**TPM Webinar 19**

# Transportation Performance Management Webinar Series

- Our TPM webinar series is held every two months, on topics such as communications, system performance management, data sources, and many more to come!
- Today is the 19<sup>th</sup> webinar in our bi-monthly series
- We welcome ideas for future webinar topics and presentations
- Use the webinar chat panel during the webinar
  - Submit questions for today's presenters
  - Submit ideas for future webinar topics



Find us on the AASHTO TPM Portal  
<https://www.tpm-portal.com>

# Webinar Agenda

- 2:00 Welcome, Introduction, and Agenda.**  
Christos Xenophontos, Chair, AASHTO CPBM.
- 2:05 AASHTO Welcome and Updates.**  
Anna McLaughlin, AASHTO.
- 2:10 FHWA Welcome and Updates.**  
Nelson Hoffman, FHWA.
- 2:15 Host State Welcome and Reflection on Keynote.**  
William Johnson, Colorado DOT.
- 2:25 Highlights from CPBM Peer Exchange.**  
Hyun-A Park, Spy Pond Partners, LLC.
- 2:40 CPBM Subcommittee, Work Group, and Task Force Meeting Highlights.**
- **Asset Management.** Matt Haubrich, Iowa DOT and Mike Johnson, Caltrans.
  - **Organizational Management.** Gary Vansuch, Colorado DOT, David Putz, Iowa DOT, and Gehan Elsayed, West Virginia DOT.
  - **Risk Management.** William Johnson, Colorado DOT.

# Webinar Agenda

## **2:55 CPBM Subcommittee, Work Group, and Task Force Meeting Summaries (Cont.)**

- **System Mobility and Emerging Technology.** Daniela Bremmer, Washington State DOT.
- **Emerging Performance Areas.** Deanna Belden, Minnesota DOT and Kelly Travelbee, Michigan DOT.
- **Policy and Rulemaking.** Ryan Huff, Nebraska DOT and Lori Fisette, Rhode Island DOT.
- **Research.** William Johnson, Colorado DOT and Edgardo Block, Connecticut DOT.

## **3:20 Reflection on Business Meeting.**

Christos Xenophontos, Rhode Island DOT.

## **3:25 Synthesis, Next Steps, and Wrap-Up.**

Christos Xenophontos, Rhode Island DOT.

# AASHTO Welcome and Updates

---

**Anna McLaughlin**

AASHTO

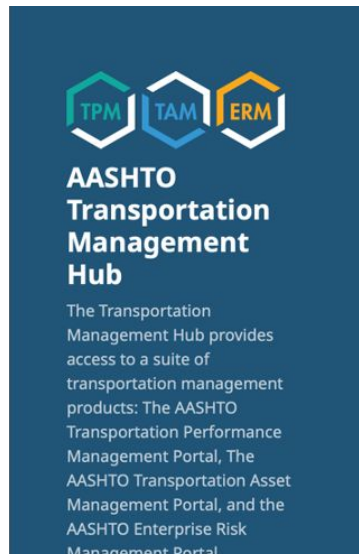
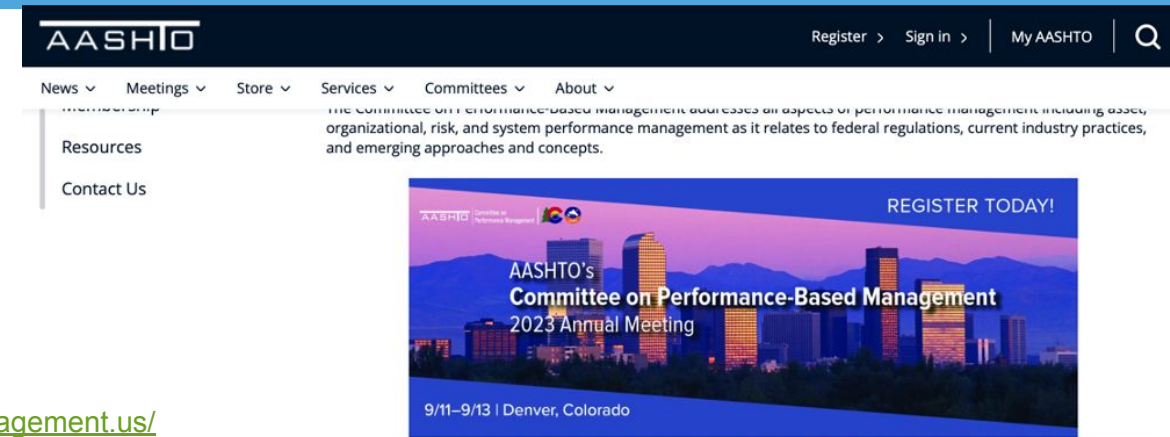
[amclaughlin@aaashto.org](mailto:amclaughlin@aaashto.org)



# AASHTO Resources

- [AASHTO Committee on Performance-Based Management Website](#)
- [Transportation Management Hub](#)
- [TPM Portal](#)

<https://www.transportationmanagement.us/>



## Transportation Management Web Portals



### AASHTO Transportation Performance Management Portal

The TPM Portal was developed to showcase best practices, foster collaboration, and serve as a repository for TPM resources. Access the TPM Portal...

<https://www.tpm-portal.com/>

### AASHTO Liaison

Anna McLaughlin,  
Program Director for Transportation Program Management  
amclaughlin@aaashto.org | (202) 624-3625

Let's talk →

### Charter of the Committee on Performance-Based Management

Learn More →



<https://transportation.org/cpbm/>

# What is the most important information that you gained from the AASHTO CPBM Annual Meeting?

- How many amazing new people we have involved with CPBM - I'm excited to see where we go from here!
- Business plans and engagement opportunities for subcommittees
- Great peer relationships and contacts, understanding of the function and work of the team, hearing about new and exciting things happening for performance based management. Insight that was shared through the collaborative conversations with other engineers
- Risk Management and Data Performance - better understanding of both
- Information on the ACB project

# If you attended the peer exchange, what is the most important takeaway for you?

- We have come a long way, but have a lot still to do. It seems that in some cases we're reaching the point of diminishing returns with NCHRP research products...
- B/C analyses for discretionary grant opportunities and performance management
- The value of sharing experiences, knowledge and best practices with each other
- Impact of AI - and drafting of Resiliency Plans (Planning)
- Opportunity to collaborate more often with other states



# What would have made the annual meeting and/or peer exchange even more valuable to you?

- With so many new people, I'm not sure I had the chance to meet them all - would have found value in more structured "terms building" activities...
- Maybe a poster session type Q&A after presentation blocks. So that you audience can circulate to presenters of interest and have small group Q&A session time.
- A sort of roster list by agency of the types of performance measures being used/implemented outside of the FHWA mandated measures.
- First Time - alot of information to digest and catch up on - but a good, friendly, and helpful group.

# What topics would you like to see emphasized in future meetings?

- Emerging performance measures; B/C analyses
- A session of peer share/idea share time for like measures in the list above. small breakouts for categories (project development, project delivery, environmental, quality, etc).
- Performance Management for Risk and Resilience
- Not sure
- Performance metrics/management around other topics such as workforce development, knowledge management etc.

# Is there anything else you'd like to share about the event?

---

- I thought it was organized very well. Kudos to the whole AASHTO team... great support from SPP too.
- Cool friends and great food.
- It was a great city to host an event, and the downtown hotel location was very nice
- Well organized, well planned, good location. Great Speakers and information.

# FHWA Welcome and Updates

---

**Nelson Hoffman**

FHWA

[Nelson.Hoffman@dot.gov](mailto:Nelson.Hoffman@dot.gov)



# FHWA Resources

- FHWA Transportation Performance Management Website
  - FHWA TPM Guidance on PMF Reporting
  - FHWA Website – How TPM and Asset Management Work Together



<https://www.fhwa.dot.gov/tpm/>

# Host State Welcome and Reflection on Keynote

**William Johnson**

Colorado DOT

[will.johnson@state.co.us](mailto:will.johnson@state.co.us)

**Link to CPBM Annual Meeting and Peer Exchange page:**

<https://www.tpm-portal.com/events/aashto-committee-on-performance-based-management-2023-annual-meeting/>



# Highlights from Peer Exchange

**Hyun-A Park**

Spy Pond Partners, LLC

[hpark@spypondpartners.com](mailto:hpark@spypondpartners.com)

**Link to CPBM Annual Meeting and Peer Exchange page:**

<https://www.tpm-portal.com/events/aashto-committee-on-performance-based-management-2023-annual-meeting/>



# Peer Exchange Purpose & Activities

- Purpose
  - Advance the state of performance management practice
  - Discuss ingredients for implementing, sustaining good practices
  - Gain knowledge of available resources to support TPM
  - Share the experience of recent TPM implementation
  - Discuss what next generation of performance management will look like
  - Prioritize future initiatives for FHWA, AASHTO, and TRB
- Attendees shared, learned, discussed, developed a vision, prioritized future activities



# A. Elements of Good Performance Management

- Good performance management is a complex set of related activities, involving people, processes, tools and resources
- Agencies discussed what elements are the most important in advancing performance management practice
- Speakers included:
  - Deanna Belden, Minnesota DOT
  - Louis Feagans, Indiana DOT
  - Alejandra Garcia Acevedo, Colorado DOT
  - Rick Scott - Vermont DOT

## B. Coordinating Across Stakeholders

- Having effective performance management requires coordination across planning, programming, budgeting, and monitoring
- This session focused on how to improve internal and external coordination for performance management, including:
  - Stakeholder engagement, coordination, and communication
  - Integrated understanding and responses across measurement areas, departments, and with partners
  - Data analytics and sharing

## C. Biennial PMF Reporting

- Agencies have had several cycles of federal TPM reporting.
- This session included:
  - Basics of TPM reporting
  - What we've learned
  - Resources to help DOTs
  - How FHWA is using the information
- Discussion and State DOT feedback, including:
  - Form improvements
  - Aligning timelines
  - Improving communication



# Day 1 Ideas to Consider

- Reflect on how we can build upon successes and replicate or expand leading practices
- Think about how we can overcome missteps and put those lessons into practice
- Consider your vision for performance management into the future
- Consider ways FHWA, AASHTO, and the TSP can be of assistance to you going forward

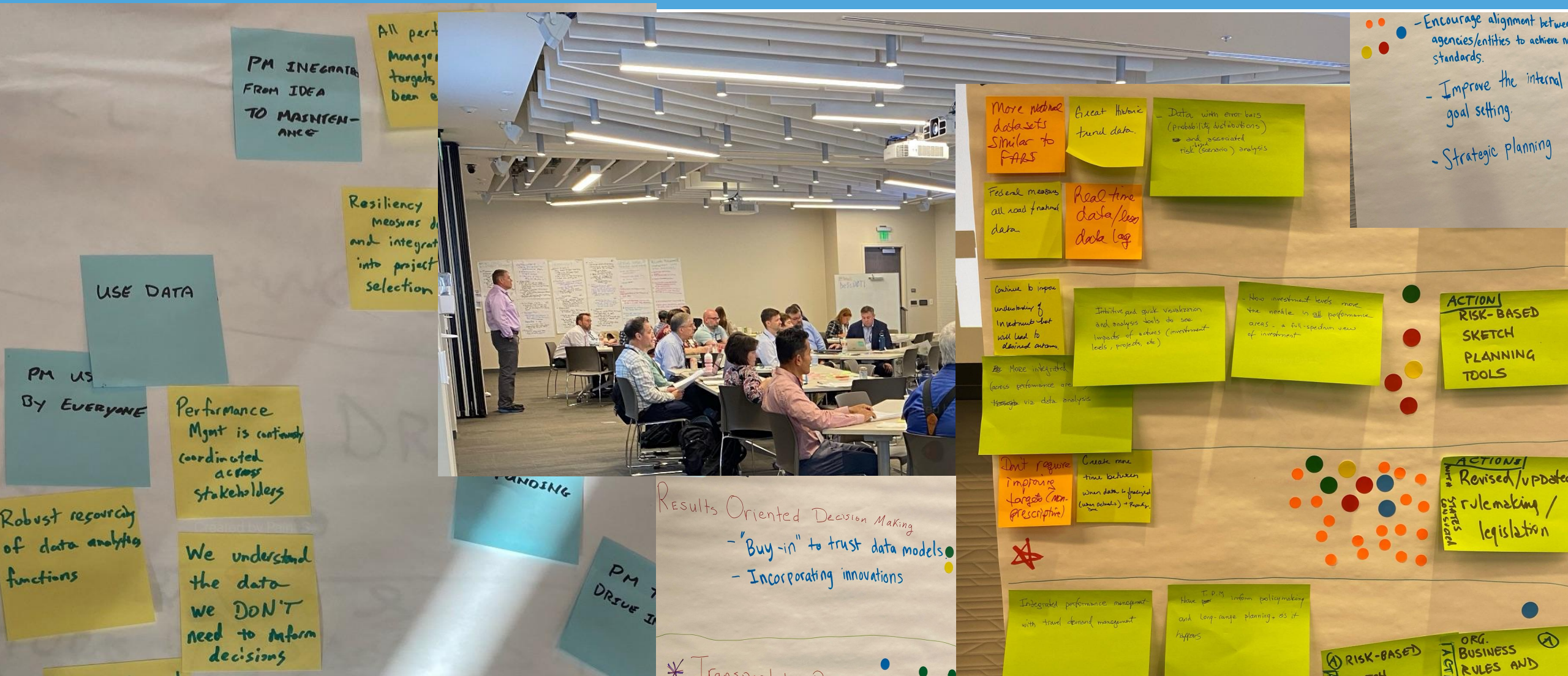
# D. Aligning Performance Management & Asset Management Fishbowl Topics

- Decision-Making for Good Investment Choices.
- Technology and Performance Management.
- Getting more Sophisticated with Data.
- Aligning Performance Management with Other Agency Disciplines





# E. Performance Management Vision for the Future





# F. How Can We Improve Practice?

- Objective: To pull all the elements together for a well-aligned and forward thinking performance management program.
- This session included:
  - Small group ideas generation
  - Group report outs
  - Prioritization exercise



# Top Priorities for Action

1. Standards for evaluating performance after project completion. (31)
2. Improved federal requirements; work collaboratively with DOTs and Feds to make new requirements together.(26)
3. Identify data gaps, incorporate new data collection processes to close gaps. (24)
4. Get different perspectives from FHWA on guidance via listening sessions, effectively improve regulation updates to improve state flexibility and reduce paperwork that goes along with TPM. (22)
5. Peer exchange, workshop, or roundtable, or conference to discuss measures of liveability, quality of life, welfare, and well-being. (16)



# Peer Exchange Wrap Up & Next Steps

- Lessons learned about aligning TPM with TAM and other disciplines
- Performance management vision for future
- Next steps
  - CPBM priorities
  - TSP activities
  - Research statements
  - Future events



# Asset Management

**Matt Haubrich**

Iowa DOT

[Matthew.Haubrich@iowadot.us](mailto:Matthew.Haubrich@iowadot.us)

**Mike Johnson**

Caltrans

[michael.b.johnson@dot.ca.gov](mailto:michael.b.johnson@dot.ca.gov)



# Annual Meeting - Asset Management

**Asset Management Subcommittee (CPBM-AM):** We held our annual meeting in July in conjunction with the 14th National Conference on Transportation Asset Management in Boston.

Conference presentations are available from the conference website.



# Work Plan - Asset Management

## Ongoing Efforts:

- Monthly TAM Community Meetings (joint with TRB AJE30)
- Supporting the FHWA/AASHTO bi-monthly TAM Webinar Series
- Research project development/support

**AM Work Plan Update:** Our work plan for the year includes three new initiatives on top of our existing efforts.

1. **TAM Resource Guide Team** is starting to form - working to schedule a kick-off meeting
2. **TAMP Review Rubric Team** has not formed yet, but is a priority
3. **Demonstration of Progress Team** led by Michael Johnson (Caltrans); the team has collected quite a few of the the state documents. Next step will be to begin review.

# Organizational Management

**Gary Vansuch**

Colorado DOT

[gary.vansuch@state.co.us](mailto:gary.vansuch@state.co.us)

**Gehan Elsayed**

West Virginia DOT

[gehan.m.elsayed@wv.gov](mailto:gehan.m.elsayed@wv.gov)

**David Putz**

Iowa DOT

[David.Putz@iowadot.us](mailto:David.Putz@iowadot.us)



# Risk Management

**Nathan Lee**

**Chair**

Utah DOT

[nlee@utah.gov](mailto:nlee@utah.gov)

**William Johnson**

**Co-Chair**

Colorado DOT

[will.johnson@state.co.us](mailto:will.johnson@state.co.us)

**Monica Aleman-Smoot**

**Vice Chair**

Texas DOT

[Monica.AlemanSmoot@txdot.gov](mailto:Monica.AlemanSmoot@txdot.gov)

**Patrick Cowley**

**Secretary**

Utah DOT

[patrickcowley@utah.gov](mailto:patrickcowley@utah.gov)



# Risk Management

## CPBM Risk Management Sponsored Research

### FY24 Projects:

- Developing New Performance Metrics for Risk Management - [NCHRP 23-35](#)
- A Guide to Integrating Performance Management, Risk Management, and Process Improvement - [NCHRP 23-37](#)
- Incorporating Risk Management into Maintenance Practice - [NCHRP 23-38](#)

### Active Research:

- Transportation Asset Risk and Resilience (Risk & Resilience Manual) - [NCHRP 23-32](#)

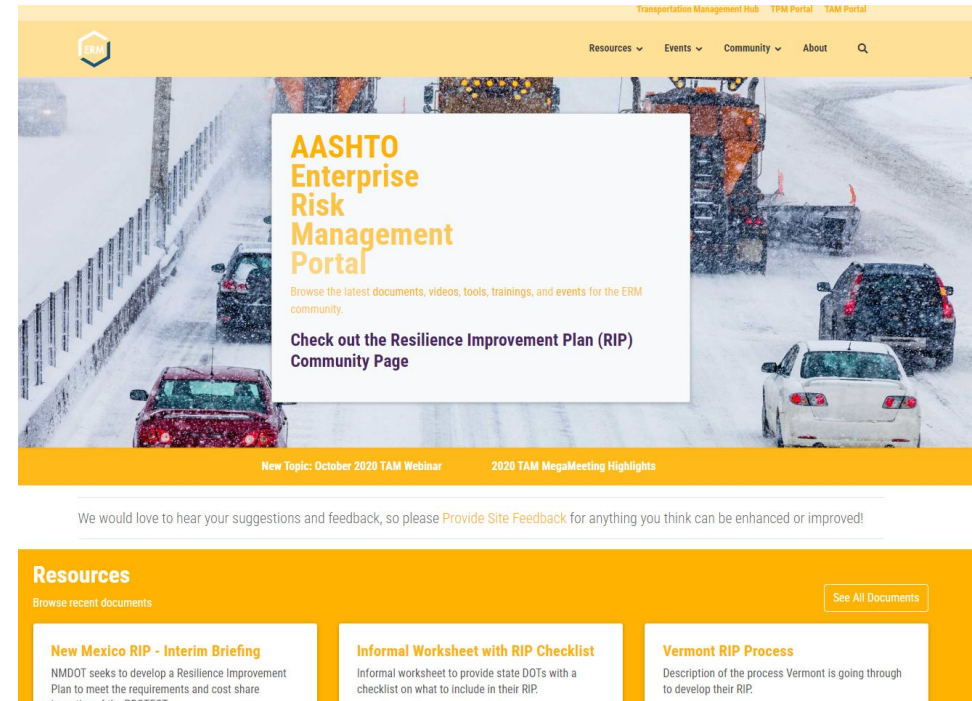




# Risk Management

## ERM Portal

- Opportunities for enhancements:
  - Documents - like RIPs, PMs, policy
  - Research - specific to Risk Management
  - Tools - BCA models, assessment calcs
  - AASHTO ERM Guide





# Risk Management

## Cross Committee Collaboration

- US DOT Coalition on REsilience
- AASHTO RIP Meeting
- AASHTO Risk Task Force
- AASHTO Committee on Transportation System Security and Resilience
- TRB Risk Subcommittee



# Joint Subcommittee on System Mobility and Emerging Technology

**Daniela Bremmer**

Washington State DOT

[BremmeD@wsdot.wa.gov](mailto:BremmeD@wsdot.wa.gov)



# Annual Meeting - SMET Meeting Highlights

**Attendance:** provided a hybrid approach; initial delay due to the prior agenda overrunning time, but good attendance. By mid meeting, standing room only for those attending in person (20 plus 4 virtually).

## **SMET Strategic Plan Update : NCHRP Project 20-123(12)**

Strong interest in the survey results of emerging and current technology deployments  
State DOTs are now using or considering and related challenges

Because the NCHRP project is still underway, we could not share the full results of the survey, but received permission to share some of the highlights during the meeting presented in slides

However, SMET is unable to distribute these slides until the NCHRP project is finished

# Annual Meeting - SMET Meeting Highlights

## **Other discussions during the meeting:**

Data: lively discussion with strong emphasis and need around the data topic, including

- ❑ standardized ways to look at before and after interventions/strategies, e.g. at intersections.
- ❑ bias based on data we can gather vs. data we can't gather
- ❑ share experiences/data in technology deployments tested and used (i.e RSUs, AI etc)
- ❑ how do we standardize conflation
- ❑ application of comprehensive data sets (experience, where, how, what, results?)
- ❑ what data do we actually need to make decisions? Will more or more detailed data actually impact our decisions?

# Emerging Performance Areas

**Deanna Belden**

Minnesota DOT

[deanna.belden@state.mn.us](mailto:deanna.belden@state.mn.us)

**Kelly Travelbee**

Michigan DOT

[TravelBeeK@michigan.gov](mailto:TravelBeeK@michigan.gov)



# Task Force Objectives

- Support AASHTO strategic plan goals.
- Identify emerging performance areas and develop new performance measures that support big picture goals
- Share best practice for integrating new measures into agency decision-making.
- Create platform for knowledge exchange.
- Develop research and synthesis proposals; volunteer to serve on research and synthesis project teams.

# Example Performance Areas of Interest

- Accessibility/Destination Access
- Equity
- Resilience
- Carbon/Greenhouse Gas Reduction
- Public Value Creation
- Health



# Annual Meeting - Agenda

- Destination Access/Accessibility – Deanna Belden, Minnesota DOT
- Carbon Reduction Strategies/Integrating GHG Assessment into Planning – Darius Pakbaz and Chris Laplante, Colorado DOT
- Creating a New Transportation Vision: ‘Moonshot’ focus; overview of ALICE – Kelly Travelbee, Michigan DOT

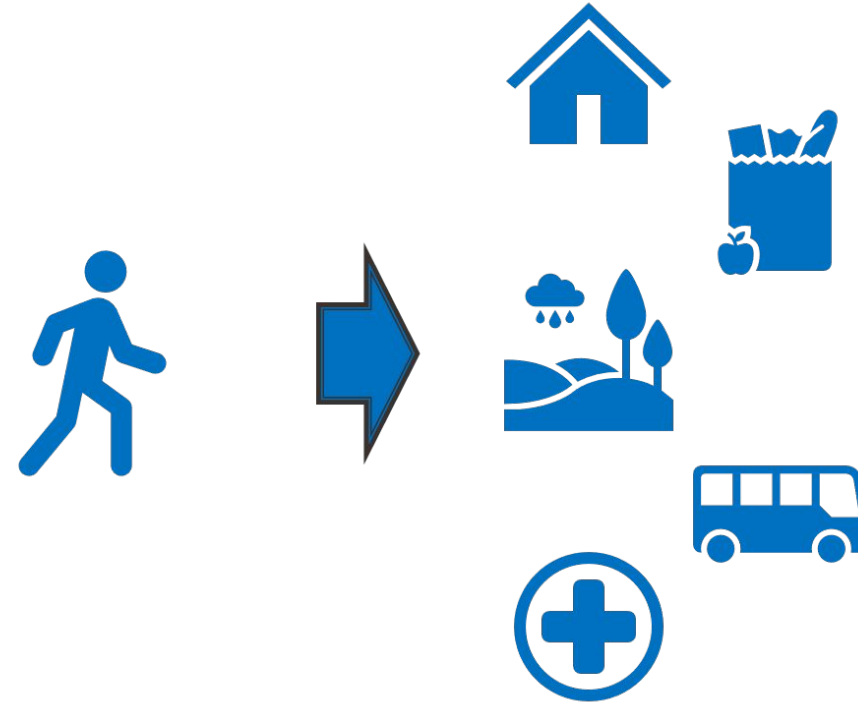


# Accessibility/Destination Access

Multimodal accessibility measures the ease of **reaching priority destinations**

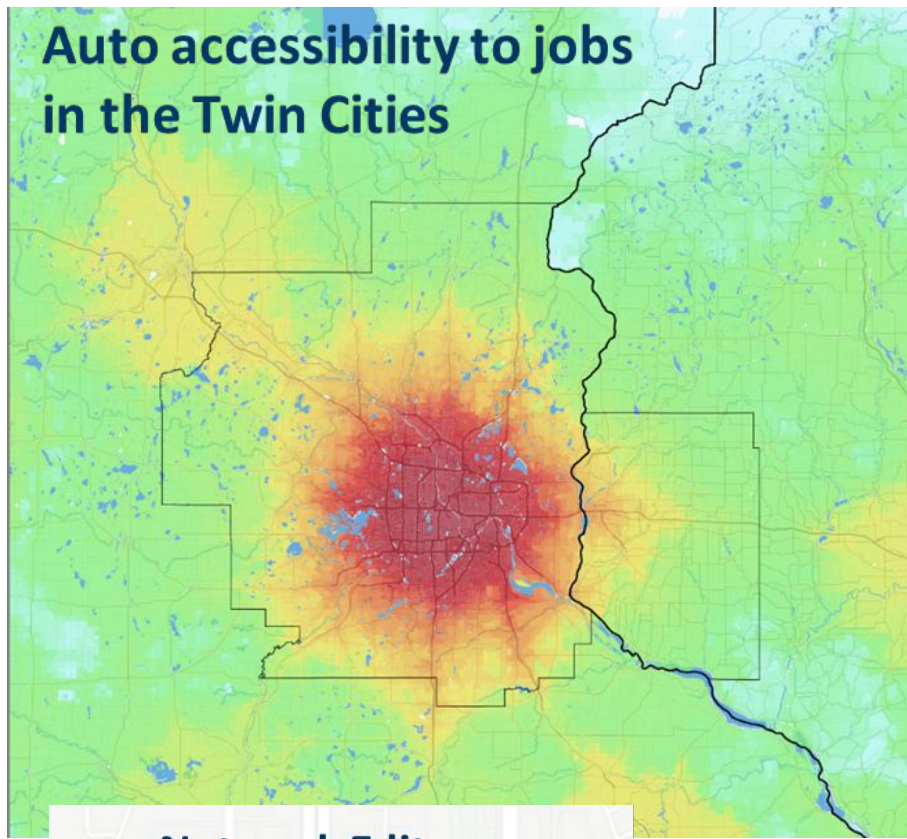
(Ex. How many jobs, grocery stores, or pharmacies are reachable in 30 minutes by walking, biking, transit or vehicle?)

Measures either from a given point OR a defined area

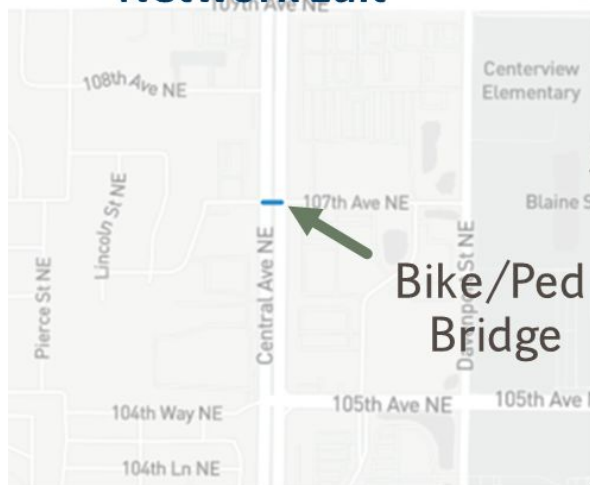




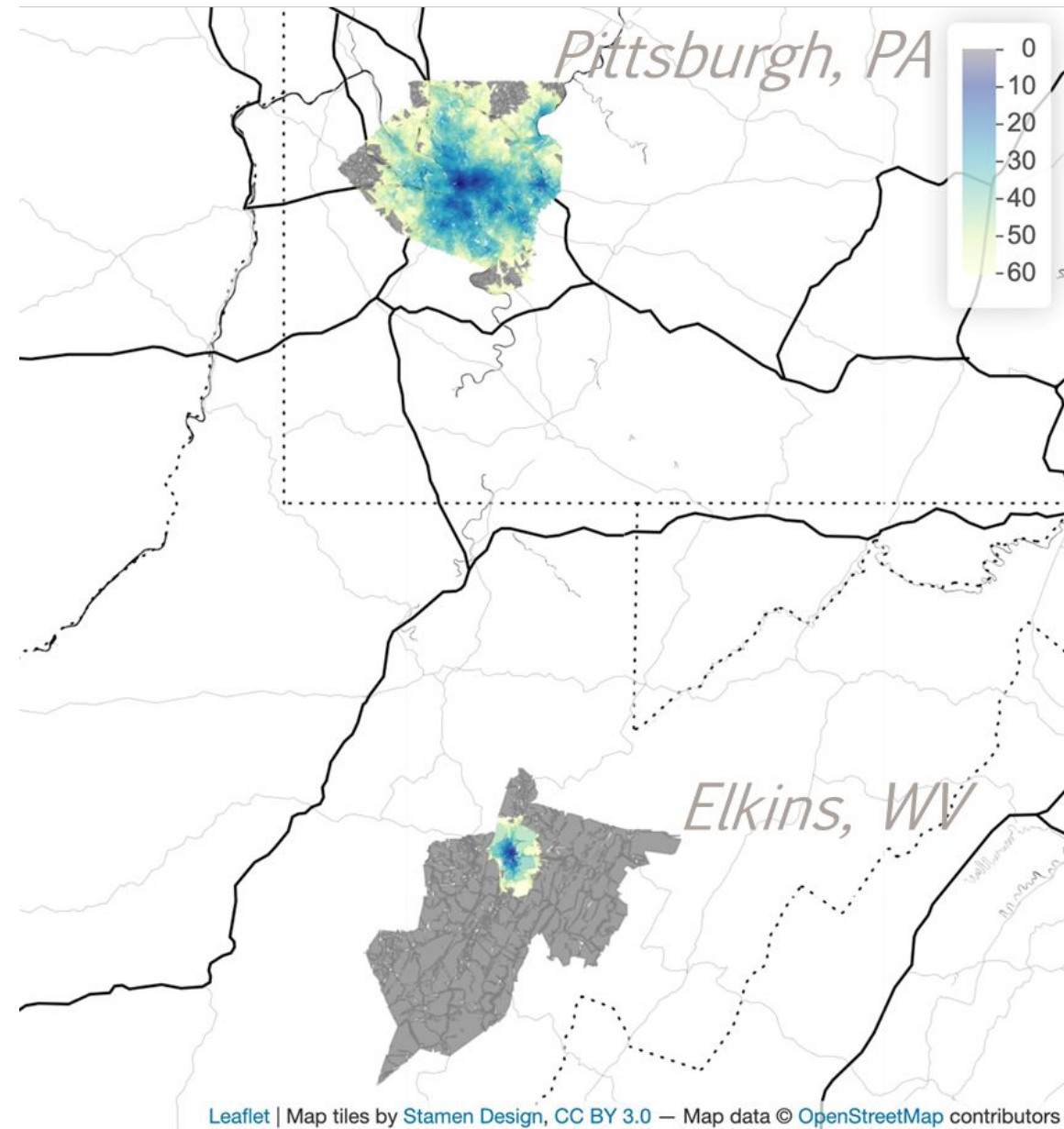
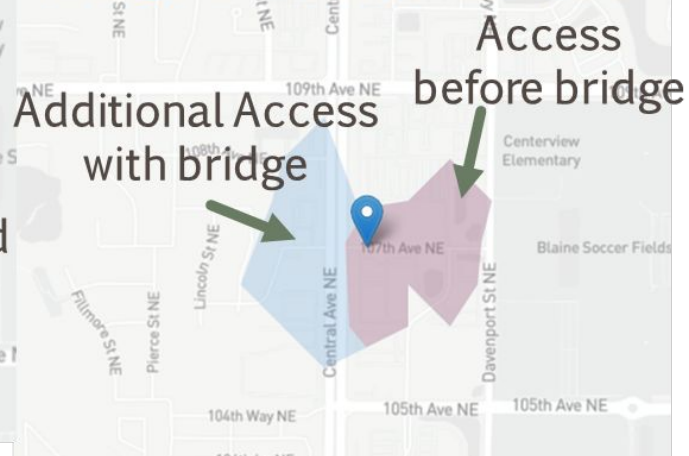
## Auto accessibility to jobs in the Twin Cities



### Network Edit



### Change in Access, 5 min walk



Leaflet | Map tiles by Stamen Design, CC BY 3.0 — Map data © OpenStreetMap contributors

## Access in Appalachia



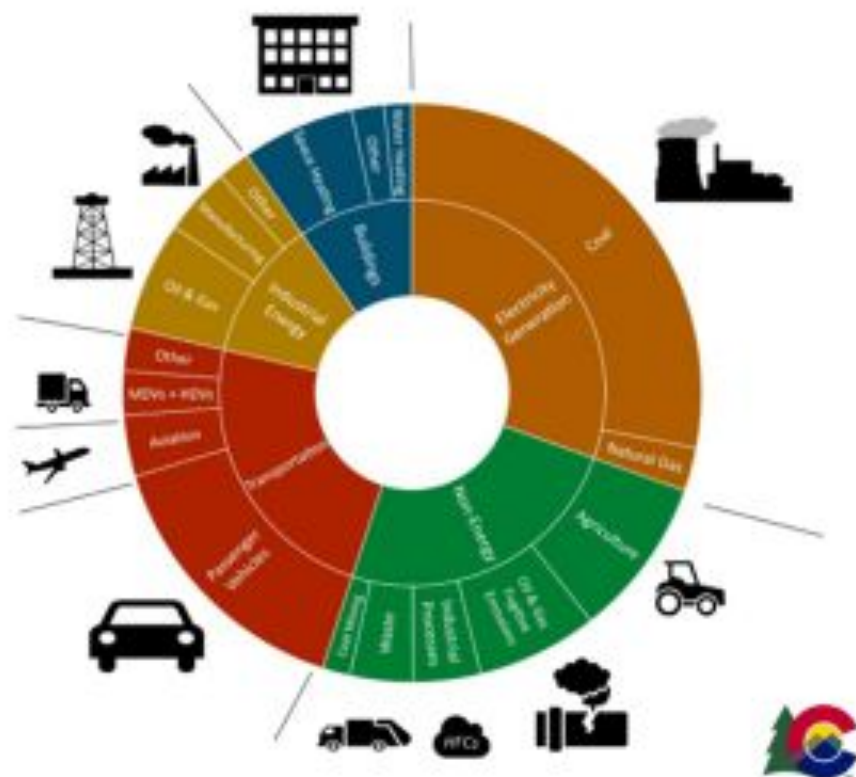


**COLORADO**

Department of Transportation

**Colorado's Pollution Reduction Planning Standards: *A Model To Account for Greenhouse Gas Pollution Impacts of Planning Choices in the Built Environment***

Darius Pakbaz - Director, Division of Transportation Development | Colorado Department of Transportation  
Chris Laplante - Air & Climate Section Manager | Colorado Department of Transportation



## House Bill 19-1261 - Climate Action Plan to Reduce Pollution

- Reduce GHG emissions 26% by 2025, 50% by 2030, and 90% by 2050.

## Colorado Greenhouse Gas Roadmap

- A list of near-term actions the State will pursue over the next few years to make significant progress toward the Climate Action Plan goals.

## Senate Bill 21-260

- Made the Roadmap recommendation for transportation planning a requirement.





# Real World Impacts

## **Inclusion of more multimodal project features**

- CDOT initiated new micro-transit bus service as part of reconstruction of the “Floyd Hill” segment of I-70.

## **Empowerment of MPOs to drive important conversations about infrastructure impacts**

- Denver Regional Council of Governments has begun addressing land use in a meaningful way far exceeding past precedent.
- Staff has begun to “pressure test” proposals to widen arterials that once composed much of the region’s long-range plan.
- DRCOG’s planning process has moved to prioritize and accelerate significant transit investments like bus rapid transit.

## **Strengthening modeling and analytical capabilities**

- Rule prompts agencies to develop and adopt state-of-the-art travel demand models that take into account not just driving but also walking, biking, telework, smart development, and induced demand.
- CDOT and MPOs are working together to share best practices and technical capabilities.

# National Transportation Vision

A transportation system focused on **connecting communities**, **moving people and goods**, and **meeting customer needs** at all scales – from local to global – delivered as a **partnership** between state DOTs and other public, private, and civil sector partners.

- Developed through NCHRP 20-24 (138) with input from the leadership of 52 state departments of transportation.
- The vision was adopted by AASHTO and member departments under Policy Resolution PR-1-22.
- Encourages state DOTs work toward implementing the shared vision through **individual actions that are appropriate for the context of each state.**



# NEXT ERA TRANSPORTATION MOONSHOT

Work with partners to reduce the share of households who cannot afford basic survival costs by xx percent by 2030 through enhanced transportation accessibility and affordability

Asset Limited, Income Constrained, Employed (ALICE)



# Policy and Rulemaking

**Ryan Huff**

Nebraska DOT

[ryan.huff@nebraska.gov](mailto:ryan.huff@nebraska.gov)

**Lori Fisette**

Rhode Island DOT

[lori.fisette@dot.ri.gov](mailto:lori.fisette@dot.ri.gov)



# Policy and Rulemaking

The screenshot displays the TPM (Transportation Policy and Rulemaking) website's 'Policy and Rulemaking Work Group' page. The page is currently under construction, as indicated by the text: 'This page is under construction. Please [click here](#) to email us if you would like to help develop this page or to submit edit requests.' The page features a teal header with the TPM logo and navigation links: Resources, Tools, Events, Community, and About. Below the header, the title 'Policy and Rulemaking Work Group' is prominently displayed. A horizontal navigation bar contains five buttons: 'Mission & Vision', 'How Do I Participate?', 'Meetings & Events', 'Membership', and 'Resources' (which is highlighted in dark teal). Under the 'Connected Resources' section, it states 'No items found'. Similarly, the 'Your Community's Resources' section also shows 'No items found'. At the bottom left, there is an 'Admin Login' button. The left sidebar, partially visible, lists leadership roles: Chair (Paul Degge), Vice-Chair (Ryan H.), AASHTO Liaison, and FHWA Liaisons (Alexis Kuklenski, Mshadoni S).

<https://www.tpm-portal.com/community/policy-and-rulemaking-work-group/>





# Policy and Rulemaking

## Roles and Responsibilities

- **Policy Development:** develops and promotes guidelines, and best practices that address various aspects of policy and rulemaking. These guidelines and best practices are often developed collaboratively with its members to ensure consensus and relevance.
- **Rulemaking Participation:** participates in the federal rulemaking process by providing input, comments, and recommendations on proposed regulations related to performance based management. This ensures that state DOT's perspectives and expertise are considered during the rulemaking process.



# Policy and Rulemaking

## Vision and Mission

- **Vision:** *"Shaping the Future of Transportation through Effective, Innovative and Inclusive Rulemaking and Policy Development"*
- **Mission:** *"The mission of the AASHTO Policy and Rulemaking Work Group is to collaboratively and proactively develop, or help refine, performance based management policies and rules that promote safe, efficient, sustainable, and innovative transportation systems across the United States."*



# Policy and Rulemaking

## Action Plan (Selected)

- Revisit the Effectiveness of TPM and Target Setting
- Review IIJA Pilot Programs Related to Performance
- Research the Impact of new Policy on Performance



# Policy and Rulemaking

## Action Plan (Selected)

- Work with AASHTO on Re-Authorization Roadmap
- Develop a List of Research Needs
- Continue Ongoing Engagement and Other “Bookkeeping” Activities



# Research

**Edgardo Block**  
**Chair**

Connecticut DOT  
[edgardo.block@ct.gov](mailto:edgardo.block@ct.gov)

**Alma Mujkanovic**  
**Vice Chair**

Georgia DOT  
[amujkanovic@dot.ga.gov](mailto:amujkanovic@dot.ga.gov)



# Research

## Research World Map

Main Category (Key words to guide assignment of major category)	TAM (Infrastructure, Maintenance Management, Preservation, Renewal, Life Cycle Management, Asset Valuation)	Risk & Resilience (ERM, Climate Change, Extreme Weather, Pandemic, Emergency Management)	Environment & Health (GHG, Emissions, Bike/Ped Support, Health Access)	Performance Management (Performance-Based Planning & Programming, Metrics, Target Setting, Resource Allocation)	System Operations & Safety (Traffic Operations, TSMO, Traffic Engineering, Safety)	Organizational Management (Process Improvement, Leadership, Public/Private Partnerships, Funding, Legislation, IIA, Communication)	Workforce & DEI (Knowledge Management, Competencies, Diversity, Equity, Inclusion)	Data & Information (Data Collection, Integration, Analysis, Visualization)	Emerging Technologies (EVs, CAVs, AI/ML, LIDAR, RFID, Wireless)	Active Transportation (Bike/Ped, Non-Motorized)	Public Transportation (Transit, Transit Agencies)
<b>ACTIVE</b>											
NCHRP 08-167 A Guide for Creating Effective Visualizations				X				X			
NCHRP 08-168 Analysis and Assessment of the National Performance Management Data								X			
NCHRP 08-169 EDI (Equity, Diversity, and Inclusion) and Other Indicators to Improve TAM Impact and Outcomes	X						X				
NCHRP 23-32 Development of the AASHTO Highway Asset Risk & Resilience Manual: Phase 1		X									
NCHRP 08-138 Connecting Transportation Asset Management (TAM) and Transportation System and Management Operations (TSMO)	X				X						
NCHRP 08-118 Risk Assessment Techniques for Transportation Asset Management	X	X									
NCHRP Synthesis 20-05/Topic 52-02 Using Bridge Element Data in Asset Management Decision Making	X							X			
NCHRP 02-25 Attracting, Retaining, and Developing the Transportation Workforce: Design, Construction and Maintenance							X				
NCHRP Synthesis 20-05/Topic 52-01 Highway Infrastructure Inspection Practices for the Digital Age	X							X	X		
NCHRP 02-26 Implementation of Life-Cycle Planning Analysis in a Transportation Asset Management Framework	X										
Plan	X										
NCHRP 23-09 Scoping Study to Develop the Basis for a Highway Standard to Conduct an All-Hazards Risk and Resilience Analysis		X									
NCHRP 13-06A Guide for the Formulation of Long-Range Plans and Budgets for Replacement of Highway Operations Equipment	X				X						
NCHRP 20-24(127) Performance Management Implementation Concerns, Issues and Challenges				X							
NCHRP 14-42 Determining the Impact of Connected and Automated Vehicle Technology on State DOT Maintenance Programs	X								X		
NCHRP 08-127 Emerging Issues: Impact of New Disruptive Technologies on the Performance of DOTs						X			X		
NCHRP 23-07 Effective Methods for Setting Transportation Performance Targets				X							
NCHRP 20-127 Business Case and Communications Strategies for State DOT Resilience Efforts		X				X					
NCHRP 03-140 Guidelines for Applications of RFID and Wireless Technologies in Highway Construction and Asset Management	X								X		
ACRP 09-21 Guidelines for the Effective Transition of Asset Data from Design/Construction to Operations and Maintenance	X							X			
NCHRP 08-137 Further Enhancements and Content for the AASHTO Transportation Asset Management Guide	X										
NCHRP 08-136 Guidance on Using Performance-Based Management Approaches for Maintenance	X										
<b>RECENT</b>											
NCHRP 08-113 Integrating Effective Transportation Performance, Risk, and Asset Management Practices (NCHRP Research Report 985)	X	X		X							
NCHRP Project 08-115 NCHRP Report 956 – Guidebook for Data and Information Systems for TAM	X							X			
NCHRP Synthesis 20-05/Topic 51-05 Collaborative Practices for Performance-Based Asset Management between State Transportation Agencies and Metropolitan Planning Organizations	X			X							
NCHRP 23-06 A Guide to Computation and Use of System Level Valuation of Transportation Assets	X										
NCHRP 20-65/Task 77 Lessons Learned and Impacts to Date of State DOT Implementation of New Federal Transit Asset Management and Public Transportation Agency Safety Requirements	X					X					X
NCHRP 20-116 A Pandemic Playbook for Transportation Agencies (NCHRP Research Report 963/TCRP Research Report 225)		X				X					



# Research

## Projects X Stage X Subcommittee

## Research World Map

	Concept	Programmed	Active	Recent	Total
EM	2				2
ERM	3	1	1	7	12
OM	8			3	11
SMET	3	1	1	4	9
TAM	6	1	6	9	22
ALL		2	3	13	18

## Funding X Stage X Subcommittee

	Concept	Programmed	Active	Recent	TOTAL
EM					
ERM		\$500,000	\$4,000,000	\$3,076,200	\$7,576,200
OM				\$1,700,000	\$1,700,000
SMET		\$500,000	\$450,000	\$740,000	\$1,690,000
TAM		\$500,000	\$2,170,000	\$2,455,000	\$5,125,000
ALL		\$875,000	\$1,375,000	\$5,336,617	\$7,586,617
TOTAL		\$2,375,000	\$7,995,000	\$13,307,817	\$23,677,817



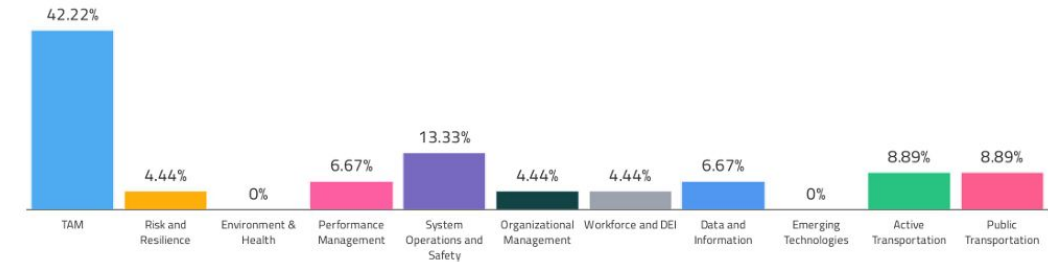
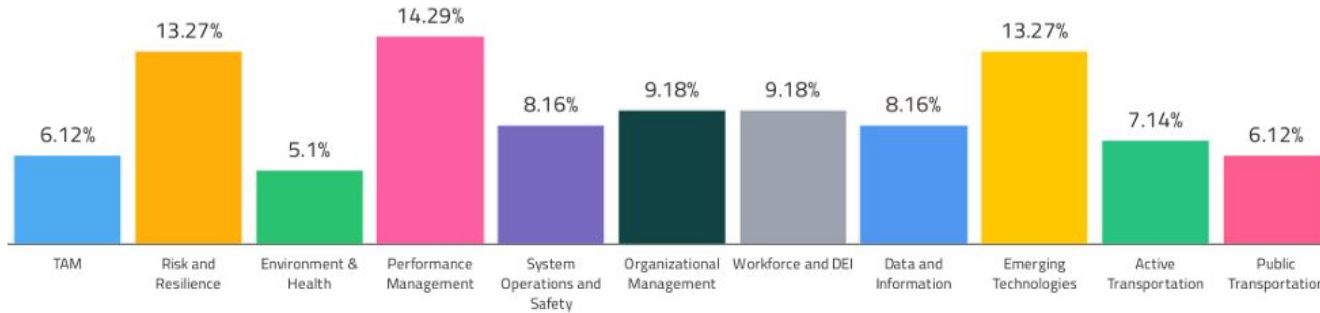


# Research

## Research World Map

Straw Poll - which topic do you think we need more concepts in?

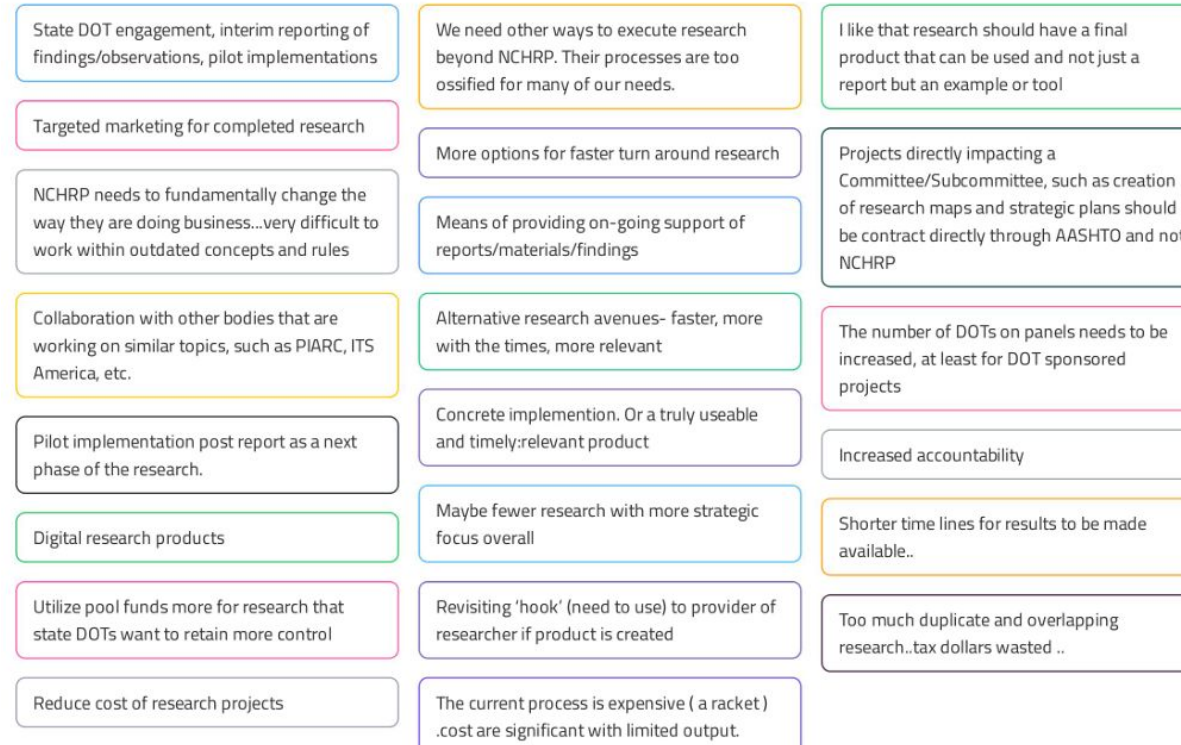
Straw Poll - which topic do you think we have done enough research concepts in?



# Research

## Research World Map

What program element / requirement should be integrated into the research pipeline and process? For instance: A state DOT engagement should be included in all projects with research for the committee, for example a research roadmap



# Research

## Research Management System

### Opportunities for Enhancement:

- Incorporate Research World Map
- Build out functionality in other CPBM Portals

Concepts	Candidates	Statements (count not final)	Projects
68	13	0	0
Research concepts in the Pool	Candidates considered for advancement this year	Prioritized statements being developed for potential submission this year	Proposed projects from CY23
<a href="#">Add a new concept to the Pool</a>	<a href="#">View all the candidates considered for advancement this year</a>	<a href="#">View the current set of research statements</a>	<a href="#">View the current project pipeline</a>
<a href="#">View all the concepts in the Pool</a>	<a href="#">Add a comment on a candidate considered for advancement this year</a>	<a href="#">Add a comment on a candidate statement</a>	<a href="#">Log in to update project information</a>
<a href="#">Add a comment on a concept</a>		<a href="#">Volunteer to help develop a statement</a>	<a href="#">Log in to add a new project</a>
			<a href="#">Prepare a report</a>



# Reflection on Business Meeting

---

**Christos Xenophontos**

Rhode Island DOT

[christos.xenophontos@dot.ri.gov](mailto:christos.xenophontos@dot.ri.gov)



# Action Items

- AASHTO work with SPP to provide webinar analytics to CPBM leadership
- Susan follow-up on status of new template for comments submission
- Volunteer Opportunity: Vice-Chair for SMET
  - Email Daniela Bremmer at [BremmeD@wsdot.wa.gov](mailto:BremmeD@wsdot.wa.gov)
- AASHTO begin planning 2024 Annual CPBM meeting
  - In conjunction with Data & Planning, hosted by Connecticut DOT in Mystic
- AASHTO begin approval process for a 2025 AASHTO conference with other AASHTO committees
- CPBM make a formal request for a 2026 TRB TAM Conference
  - Provide timeline for TRB to respond
- CPBM Leadership to consider doing annual survey

# Synthesis and Next Steps

---


**Christos Xenophontos**

Rhode Island DOT

[christos.xenophontos@dot.ri.gov](mailto:christos.xenophontos@dot.ri.gov)



CPBM Annual Meeting Event Page:  
<https://www.tpm-portal.com/events/aashto-committee-on-performance-based-management-2023-annual-meeting/>



Resources ▾Tools ▾Events ▾Community ▾About

Q


# AASHTO Committee on Performance-Based Management 2023 Annual Meeting

This event occurred on 2023-09-13.


The AASHTO CPBM Peer Exchange and Business as UN-Usual Annual Meeting took place from Monday, September 11 through Wednesday, September 13, 2023 at the Colorado DOT. Materials from the event are now available. Find materials from sessions in agenda listed below:

Committee on Performance Based Management Annual Meeting – Denver, Colorado


	Monday, September 11	Tuesday, September 12	Wednesday, September 13
MORNING		<i>Breakfast at Hilton Garden Inn</i>  8:15 am   Coffee and Conversation  8:30 am   Peer Exchange <ul style="list-style-type: none"><li>TPM Peer Exchange – State DOTs only</li><li><a href="#">More information and agenda here.</a></li></ul>	<i>Breakfast at Hilton Garden Inn</i>  8:30 am – 10:00 am   Subcommittee Meetings <ul style="list-style-type: none"><li>Risk Management</li><li>Emerging Performance Areas</li></ul> 10:30 am – 12:00 pm   Subcommittee Meetings <ul style="list-style-type: none"><li>Research Subcommittee</li></ul>

 **DATE**


2023-Sep-11 - 13

 **TIME**

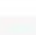
All Day

 **LABELS**

CPBM Meeting

 **LOCATION**

Denver, CO

 **CATEGORY**

Meeting

61



All TPM Webinars: <https://www.tpm-portal.com/event-directory/tpm-webinars/>

## Save the Dates!

**Visit TPM-Portal.com to register for future webinars**

Join us for the final TPM Webinar for 2023!

TPM Webinar 20: *The Future Transportation Agency:  
Pioneering a Performance Path*  
November 29, 2023 (2-3:30 PM)

Let us know topics of interest to you for 2024 webinars!



**Webinars Typically  
Begin at 2:00 PM  
Eastern Time**



information or to register:

**[TPM-Portal.com](https://www.tpm-portal.com)**